

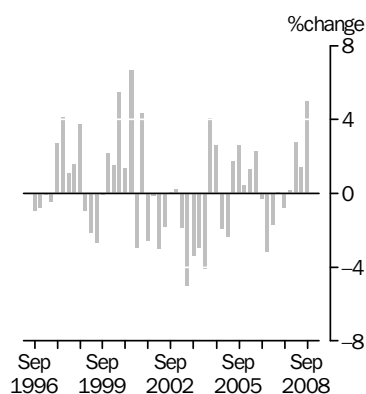
INTERNATIONAL TRADE PRICE INDEXES

AUSTRALIA

EMBARGO: 11.30AM (CANBERRA TIME) FRI 17 OCT 2008

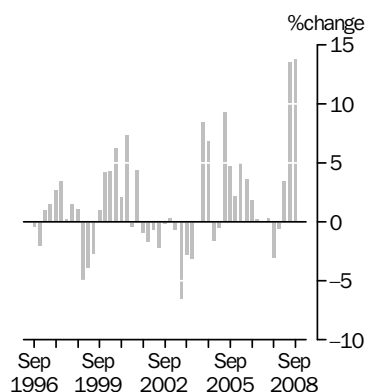
IMPORT PRICE INDEX: all groups

Quarterly % change



EXPORT PRICE INDEX: all groups

Quarterly % change



INQUIRIES

For further information about these and related statistics, contact the National Information and Referral Service on 1300 135 070 or Lee Taylor on Canberra (02) 6252 6251.

KEY FIGURES

	Jun Qtr 08 to Sep Qtr 08 % change	Sep Qtr 07 to Sep Qtr 08 % change
Import Price Index all groups	5.0	9.6
Food and live animals	2.0	5.9
Beverages and tobacco	2.8	4.1
Crude materials, inedible, except fuels	12.3	30.4
Mineral fuels, lubricants and related materials	12.1	64.2
Animal and vegetable oils, fats and waxes	0.3	29.6
Chemicals and related products, n.e.c.	9.7	11.7
Manufactured goods classified chiefly by material	4.9	2.9
Machinery and transport equipment	1.1	-4.5
Miscellaneous manufactured articles	3.4	-1.9
Commodities and transactions, n.e.c.	3.1	22.3
Export Price Index all groups	13.8	32.9
Food and live animals	6.0	36.7
Beverages and tobacco	-4.1	-13.0
Crude materials, inedible, except fuels	6.8	22.7
Mineral fuels, lubricants and related materials	42.4	109.3
Chemicals and related products, n.e.c.	4.1	2.4
Manufactured goods classified chiefly by material	-1.6	-7.2
Machinery and transport equipment	4.9	-0.2
Miscellaneous manufactured articles	6.5	0.3

KEY POINTS

IMPORT PRICE INDEX

- The Import Price Index increased by 5.0% in the September quarter 2008. The increase was mainly driven by rises in prices paid for petroleum, petroleum products and related materials (+12.1%), fertilisers (excluding crude) (+35.7%) and inorganic chemicals (+46.3%). These rises were partly offset by falls in prices paid for telecommunications equipment (-1.7%). Through the year to September quarter 2008, the Import Price Index increased by 9.6%. This is the largest annual increase since March quarter 2001.

EXPORT PRICE INDEX

- The Export Price Index increased by 13.8% in the September quarter 2008 and 32.9% through the year to September 2008. This is the largest quarterly and annual increase in the current Export Price Index since the series began in the September quarter 1974. The increase this quarter was mainly driven by rises in prices received for coal, coke and briquettes (+69.7%), metalliferous ores and scrap metal (+7.7%) and gas, natural and manufactured (+14.4%). These increases were partly offset by falls in prices received for non-ferrous metals (-5.6%) and petroleum, petroleum products and related materials (-1.5%).

NOTES

FORTHCOMING ISSUES

<i>ISSUE (Quarter)</i>	<i>RELEASE DATE</i>
December 2008	23 January 2009
March 2009	17 April 2009
June 2009	17 July 2009
September 2009	23 October 2009

.....

CHANGES IN THIS ISSUE

Both the Import Price Index and the Export Price Index have been reweighted in the September quarter 2008. This is in line with the ABS policy of reweighting these indexes annually in the September quarter, as explained in paragraphs 8-10 of the Explanatory Notes. The new weighting patterns are provided in an Appendix to this issue.

As foreshadowed in the June quarter 2008 issue of this publication, the ABS has completed a review of the International Trade Price indexes to incorporate recent updates to the classifications of Australian import and export statistics – see paragraphs 5–7 of the Explanatory Notes. An anomaly in the previous weighting pattern, identified during the introduction of the updated classifications, has resulted in more significant than usual changes to the contribution to the Import Price Index and the Export Price Index of SITC Division 28: Metalliferous ores and metal scrap and SITC Division 52: Inorganic chemicals.

Due to the annual reweighting and the changes resulting from the introduction of the new classifications, the points contribution data for June quarter 2008 shown in Tables 2, 8 and 17 differ from previous issues of this publication.

FORTHCOMING CHANGES

From the September quarter 2009, the content and format of tables 14, 15, 17 and 19 will change to reflect the contemporary industrial classification (ANZSIC06).

ROUNDING

Any discrepancies between totals and sums of components are due to rounding.

DATA REFERENCES

Data referenced in the Key points are available from the tables shown in this publication, or in the corresponding tables of this publication on the ABS website
<<http://www.abs.gov.au>>.

.....

ABBREVIATIONS

ABS	Australian Bureau of Statistics
ADP	automatic data processing
AHECC	Australian Harmonised Export Commodity Classification
ANZSIC	Australian and New Zealand Standard Industrial Classification
BEC	Classification by Broad Economic Categories
f.o.b.	free on board
HTISC	Harmonized Tariff Item Statistical Classification
n.e.c.	not elsewhere classified
SITC	Standard International Trade Classification

Ian Ewing
Acting Australian Statistician

LIST OF TABLES

page

INTERNATIONAL TRADE PRICE INDEXES

1	Import price index: All groups, index numbers and percentage changes	4
2	Import price index: SITC contribution to all groups index	5
3	Import price index: Selected SITC sections	6
4	Import price index: Consumption goods, balance of payments broad economic categories	7
5	Import price index: Capital goods, balance of payments broad economic categories	8
6	Import price index: Intermediate and other merchandise goods, balance of payments broad economic categories	9
7	Export price index: All groups, index numbers and percentage changes	11
8	Export price index: SITC contribution to all groups index	12
9	Export price index: Selected SITC sections	13
10	Export price index: Rural goods, balance of payments classification of exports	14
11	Export price index: Non-rural goods, balance of payments classification of exports	15

ADDITIONAL TABLES AVAILABLE ON ABS WEBSITE

12	Import price index, by selected SITC division	
13	Import price index, by selected HTISC section	
14	Import price index, by selected ANZSIC industry of origin division	
15	Import price index, by selected ANZSIC industry of origin subdivision	
16	Import price index, by BEC category	
17	Export price index, AHECC and ANZSIC contribution to all groups index	
18	Export price index, by selected AHECC section	
19	Export price index, by selected ANZSIC industry of origin division and subdivision	

IMPORT PRICE INDEX(a): All groups, index numbers and percentage changes

<i>Period</i>	<i>Index numbers</i>	<i>% change from previous period</i>	<i>% change from corresponding quarter of previous year</i>
2004–05	112.8	0.4	. .
2005–06	117.0	3.7	. .
2006–07	115.7	–1.1	. .
2007–08	115.0	–0.6	. .
2003			
December	112.6	–2.9	–12.6
2004			
March	108.0	–4.1	–14.6
June	112.4	4.1	–6.4
September	115.3	2.6	–0.6
December	113.1	–1.9	0.4
2005			
March	110.4	–2.4	2.2
June	112.3	1.7	–0.1
September	115.2	2.6	–0.1
December	115.7	0.4	2.3
2006			
March	117.2	1.3	6.2
June	119.9	2.3	6.8
September	119.5	–0.3	3.7
December	115.7	–3.2	0.0
2007			
March	113.7	–1.7	–3.0
June	113.8	0.1	–5.1
September	112.9	–0.8	–5.5
December	113.1	0.2	–2.2
2008			
March	116.2	2.7	2.2
June	117.8	1.4	3.5
September	123.7	5.0	9.6

. . not applicable

(a) Reference base of each index: 1989–90 = 100.0.

IMPORT PRICE INDEX(a): SITC contribution to all groups index

Category	CONTRIBUTION TO ALL GROUPS (INDEX POINTS)		CHANGE IN POINTS CONTRIBUTION
	Jun Qtr 2008(b)	Sep Qtr 2008	Jun Qtr 2008 to Sep Qtr 2008
ALL GROUPS			
All groups	117.8	123.7	5.9
SITC SECTIONS			
0 Food and live animals	4.43	4.53	0.10
1 Beverages and tobacco	0.88	0.90	0.02
2 Crude materials, inedible, except fuels	1.56	1.76	0.20
3 Mineral fuels, lubricants and related materials	21.46	24.06	2.60
4 Animal and vegetable oils, fats and waxes	0.35	0.35	0.00
5 Chemicals and related products, n.e.c.	12.85	14.10	1.25
6 Manufactured goods classified chiefly by material	12.59	13.20	0.61
7 Machinery and transport equipment	45.92	46.42	0.50
8 Miscellaneous manufactured articles	13.40	13.87	0.47
9 Commodities and transactions, n.e.c.	4.35	4.48	0.13
SELECTED SITC DIVISIONS			
03 Fish, crustaceans, molluscs and aquatic invertebrates and preparations thereof	0.62	0.64	0.02
24 Cork and wood	0.38	0.40	0.02
33 Petroleum, petroleum products and related materials	20.64	23.14	2.50
51 Organic chemicals	2.06	2.31	0.25
52 Inorganic chemicals	0.77	1.13	0.36
59 Chemical materials and products, n.e.c.	1.09	1.13	0.04
64 Paper, paperboard and articles of paper pulp, of paper or of paperboard	1.56	1.62	0.06
65 Textile yarn, fabrics, made-up articles, n.e.c., and related products	1.42	1.47	0.05
69 Manufactures of metals, n.e.c.	2.74	2.90	0.16
71 Power generating machinery and equipment	2.44	2.51	0.07
72 Machinery specialised for particular industries	4.46	4.57	0.11
74 General industrial machinery and equipment, n.e.c. and machine parts, n.e.c.	5.52	5.65	0.13
75 Office machines and ADP machines	4.65	4.73	0.08
76 Telecommunications and sound recording and reproducing apparatus and equipment	6.08	5.98	-0.10
77 Electrical machinery, apparatus and appliances, n.e.c., and electrical parts thereof	5.06	5.14	0.08
78 Road vehicles (incl. air-cushion vehicles)	15.00	15.03	0.03
79 Transport equipment (excl. road vehicles)	2.28	2.36	0.08
87 Professional, scientific and controlling instruments and apparatus, n.e.c.	2.53	2.55	0.02
89 Miscellaneous manufactured articles, n.e.c.	4.64	4.80	0.16

(a) Reference base of each index 1989-90 = 100.0.

(b) Differs from previously published June quarter 2008 due to annual reweighting.

IMPORT PRICE INDEX(a): Selected SITC sections

<i>Period</i>	<i>Food and live animals (0)</i>	<i>Beverages and tobacco (1)</i>	<i>Crude materials, inedible, except fuels (2)</i>	<i>Mineral fuels, lubricants and related materials (3)</i>	<i>Animal and vegetable oils, fats and waxes (4)</i>	<i>Chemicals and related products, n.e.c. (5)</i>	<i>Manufactured goods classified chiefly by material (6)</i>	<i>Machinery and transport equipment (7)</i>	<i>Miscellaneous manufactured articles (8)</i>	<i>Commodities and transactions, n.e.c. (9)</i>
2004-05	120.0	128.2	115.1	202.3	142.2	116.8	123.2	98.3	111.8	113.3
2005-06	125.9	132.5	121.4	288.0	160.9	117.9	126.7	95.4	112.3	142.3
2006-07	123.8	122.3	125.6	280.2	167.0	118.8	135.1	92.4	109.3	163.7
2007-08	126.2	122.8	138.8	353.7	197.8	120.7	130.0	85.2	101.1	185.1
2003										
December	117.0	134.7	112.4	152.4	135.7	112.4	118.8	104.4	115.2	110.5
2004										
March	114.5	134.0	106.6	145.2	135.3	110.6	115.2	99.3	109.1	107.8
June	116.8	132.8	111.6	171.0	134.1	115.1	120.0	101.6	112.9	111.1
September	119.5	131.1	117.2	192.2	148.3	117.4	124.5	102.6	115.1	114.2
December	119.4	128.0	114.4	200.1	143.6	116.6	123.2	99.1	112.0	115.8
2005										
March	117.7	124.4	112.6	188.2	135.5	115.7	122.4	96.2	110.1	110.8
June	123.2	129.4	116.1	228.7	141.4	117.5	122.5	95.2	109.8	112.2
September	124.9	133.3	118.4	268.9	141.1	118.2	123.1	95.5	110.8	116.8
December	125.6	133.9	120.6	270.1	156.7	118.3	124.8	95.5	111.7	132.0
2006										
March	126.3	132.8	122.2	289.2	164.2	117.3	127.0	95.3	113.4	151.2
June	126.8	129.8	124.4	323.7	181.7	117.9	132.0	95.2	113.2	169.3
September	125.3	120.6	127.6	320.5	174.5	118.7	136.1	94.4	111.5	164.6
December	124.5	124.8	127.2	266.5	165.7	118.0	136.5	93.2	110.9	161.2
2007										
March	124.7	123.9	123.2	250.8	164.8	117.2	134.9	92.0	109.2	167.0
June	120.6	120.0	124.5	282.9	162.9	121.4	132.7	89.8	105.7	161.9
September	124.6	121.8	131.4	290.6	176.1	120.6	132.0	87.5	104.0	162.2
December	122.0	122.5	131.3	330.9	178.0	119.1	129.0	85.3	100.6	178.6
2008										
March	128.8	123.7	139.9	367.4	209.6	120.4	129.4	85.1	101.3	207.0
June	129.3	123.3	152.6	425.9	227.6	122.8	129.5	82.7	98.6	192.4
September	131.9	126.8	171.3	477.3	228.3	134.7	135.8	83.6	102.0	198.3

(a) Reference base of each index: 1989-90 = 100.0.

IMPORT PRICE INDEX(a): Consumption goods

BALANCE OF PAYMENTS BROAD ECONOMIC CATEGORIES - CONSUMPTION GOODS

	Consumption goods total	<i>Food and beverages, mainly for consumption</i>	<i>Household electrical items</i>	<i>Non-industrial transport equipment</i>	<i>Textiles, clothing and footwear</i>	<i>Toys, books and leisure goods</i>	<i>Consumption goods n.e.c.</i>
2004-05	119.4	128.1	85.7	152.2	103.8	118.7	115.4
2005-06	119.0	134.9	82.3	148.0	104.1	119.3	113.6
2006-07	116.5	130.3	75.3	146.0	102.7	114.2	113.0
2007-08	112.6	131.5	65.9	143.8	96.1	103.8	110.0
2003							
December	122.3	126.0	94.4	156.8	109.9	122.3	116.5
2004							
March	118.3	123.9	89.9	154.6	101.9	115.2	113.7
June	120.9	125.9	90.9	154.9	105.2	118.8	116.8
September	122.2	128.2	89.7	154.0	108.4	121.4	118.2
December	119.9	127.2	85.9	153.8	104.8	118.9	116.1
2005							
March	117.6	125.5	84.6	151.3	101.0	117.3	113.9
June	117.8	131.3	82.7	149.5	100.8	117.2	113.4
September	119.0	133.2	84.4	149.4	101.9	118.0	114.7
December	118.7	134.7	83.3	147.7	103.7	119.4	112.6
2006							
March	119.0	135.6	81.5	147.0	105.6	119.6	113.2
June	119.2	136.0	79.9	148.0	105.3	120.3	113.7
September	118.1	132.3	77.7	147.0	106.3	116.9	113.3
December	116.9	131.1	75.5	145.4	104.3	115.2	113.2
2007							
March	116.3	130.9	75.1	146.0	101.6	114.6	112.6
June	114.5	126.7	72.7	145.4	98.5	110.0	113.0
September	113.4	130.2	69.9	142.7	98.5	107.7	112.5
December	112.0	127.8	66.7	142.5	96.4	103.8	110.4
2008							
March	113.1	134.0	64.9	145.6	96.6	104.4	109.0
June	111.8	133.9	62.2	144.4	93.0	99.4	108.2
September	114.1	136.5	65.6	143.9	97.8	103.5	110.2

(a) Reference base of each index: 1989-90 = 100.0

IMPORT PRICE INDEX(a): Capital goods

BALANCE OF PAYMENTS BROAD ECONOMIC CATEGORIES - CAPITAL GOODS

<i>Period</i>	Capital goods total	<i>Machinery and industrial equipment</i>	<i>ADP equipment</i>	<i>Telecommuni- cations equipment</i>	<i>Civil aircraft</i>	<i>Industrial transport equipment n.e.c.</i>	<i>Capital goods, n.e.c.</i>
2004-05	97.3	130.1	22.4	43.7	137.0	163.5	124.4
2005-06	93.9	129.3	19.9	38.9	145.0	159.1	121.2
2006-07	90.0	129.2	16.9	35.3	146.0	156.1	115.4
2007-08	83.0	123.8	13.3	30.1	132.2	152.4	108.4
2003							
December	102.6	130.0	26.5	53.0	138.5	166.5	129.0
2004							
March	98.3	125.9	23.7	50.9	128.3	162.2	126.0
June	100.5	131.5	24.4	49.6	135.9	164.3	127.2
September	101.4	133.7	24.7	48.4	140.0	167.6	128.4
December	98.2	129.9	22.8	46.1	137.3	164.5	123.8
2005							
March	95.3	128.6	21.4	40.4	133.5	162.8	123.5
June	94.2	128.2	20.6	39.8	137.2	158.9	121.9
September	94.2	127.3	20.7	39.5	140.0	160.0	121.9
December	94.4	128.7	20.3	39.8	144.6	161.1	122.4
2006							
March	93.5	129.6	19.6	38.2	147.0	158.1	120.9
June	93.4	131.6	18.8	38.2	148.4	157.2	119.5
September	92.1	129.9	18.3	36.5	149.2	159.0	117.8
December	91.1	130.2	17.4	36.0	148.3	156.5	117.8
2007							
March	89.5	128.7	16.6	35.0	146.2	154.8	114.3
June	87.4	127.9	15.4	33.5	140.4	154.2	111.7
September	85.3	125.4	14.6	31.5	137.0	153.6	111.4
December	83.3	124.8	13.4	29.9	131.8	154.2	107.8
2008							
March	82.7	123.1	13.0	30.2	132.4	153.3	107.7
June	80.6	121.8	12.0	28.7	127.6	148.5	106.8
September	81.2	124.6	12.0	28.6	132.1	150.5	101.9

(a) Reference base of each index: 1989-90 = 100.0.

IMPORT PRICE INDEX(a): Intermediate and other merchandise goods

BALANCE OF PAYMENTS BROAD ECONOMIC CATEGORIES - INTERMEDIATE AND OTHER MERCHANDISE GOODS

<i>Period</i>	<i>Intermediate and other merchandise goods total</i>	<i>Intermediate and other goods total excluding non- monetary gold</i>	<i>Food and beverages, mainly for industry</i>	<i>Primary industrial supplies, n.e.c.</i>	<i>Fuels and lubricants</i>	<i>Parts for transport equipment</i>	<i>Parts for ADP machinery</i>	<i>Other parts for capital equipment</i>	<i>Organic and inorganic chemicals</i>
2004-05	114.8	115.1	117.5	116.4	238.3	127.6	17.9	89.2	110.6
2005-06	127.9	127.9	121.3	122.0	341.4	129.2	15.8	87.4	113.9
2006-07	129.2	129.2	130.1	125.6	331.8	132.1	13.5	86.5	115.1
2007-08	136.2	135.6	162.1	143.1	420.2	123.7	10.6	80.1	122.8
2003									
December	108.1	108.2	115.8	115.9	177.9	134.1	21.2	95.2	102.7
2004									
March	103.1	103.2	115.6	109.9	169.9	125.0	18.9	88.9	101.1
June	110.3	110.6	114.4	112.6	200.6	128.2	19.5	91.9	106.8
September	115.7	116.0	120.4	118.5	225.8	133.1	19.7	93.3	109.1
December	114.5	114.8	117.7	119.6	235.7	127.9	18.2	89.9	108.6
2005									
March	111.7	112.0	112.7	113.3	221.4	124.7	17.1	87.1	110.4
June	117.1	117.4	119.1	114.3	270.2	124.5	16.4	86.5	114.3
September	123.2	123.5	119.1	118.4	318.5	126.2	16.5	86.8	113.0
December	124.6	124.8	119.6	121.5	319.6	127.6	16.2	87.2	114.9
2006									
March	128.6	128.5	121.6	122.4	343.0	131.1	15.6	87.7	113.3
June	135.0	134.8	124.7	125.5	384.5	131.9	15.0	87.9	114.5
September	135.6	135.6	124.8	130.1	380.5	133.4	14.6	88.2	115.3
December	128.1	128.0	128.6	129.8	315.1	133.0	13.9	87.3	112.6
2007									
March	124.9	124.8	133.4	121.7	296.3	132.8	13.2	86.4	112.1
June	128.2	128.2	133.7	120.9	335.3	129.1	12.2	84.2	120.3
September	128.5	128.1	145.1	130.4	344.7	126.0	11.6	82.6	120.6
December	131.7	131.2	148.4	133.4	393.7	122.1	10.7	80.1	119.3
2008									
March	138.9	137.5	169.8	144.1	435.6	124.8	10.4	79.6	124.9
June	145.6	145.6	185.2	164.3	506.8	121.7	9.5	77.9	126.3
September	157.7	158.3	191.6	188.9	563.4	124.8	9.6	79.3	153.5

(a) Reference base of each index: 1989-90 = 100.0.

BALANCE OF PAYMENTS BROAD ECONOMIC CATEGORIES -

INTERMEDIATE AND OTHER MERCHANDISE GOODS *continued*

<i>Period</i>	<i>Paper and paperboard</i>	<i>Textile yam and fabric</i>	<i>Iron and steel</i>	<i>Plastics</i>	<i>Processed industrial supplies, n.e.c.</i>	<i>Non- monetary gold</i>
2004-05	93.8	105.1	141.9	122.1	126.5	113.4
2005-06	94.0	105.9	143.4	128.8	134.2	142.5
2006-07	95.1	106.2	158.6	132.2	141.9	163.9
2007-08	91.4	102.1	159.6	125.2	136.6	185.2
2003						
December	103.9	102.1	109.1	112.0	122.3	110.6
2004						
March	99.3	98.7	106.6	106.7	118.3	108.0
June	97.0	105.0	124.5	116.2	123.0	111.3
September	96.0	108.4	140.3	120.7	127.4	114.3
December	93.9	105.8	138.6	121.2	126.1	115.9
2005						
March	92.7	103.5	143.5	121.9	124.9	110.9
June	92.7	102.8	145.3	124.6	127.5	112.3
September	93.9	103.4	143.4	126.3	128.6	116.9
December	94.6	106.4	143.6	127.1	131.7	132.2
2006						
March	93.6	106.9	140.7	131.1	135.4	151.4
June	93.9	107.0	145.7	130.6	141.2	169.5
September	94.4	107.1	152.5	134.2	143.7	164.8
December	95.5	107.4	158.1	134.6	143.7	161.4
2007						
March	96.5	105.0	164.3	130.2	140.5	167.2
June	94.1	105.2	159.6	129.9	139.6	162.0
September	92.6	102.8	165.6	128.1	136.2	162.3
December	92.7	101.3	158.5	123.3	132.8	178.8
2008						
March	90.3	102.4	155.5	124.3	137.6	207.2
June	89.9	101.8	158.7	124.9	139.9	192.6
September	93.3	106.7	178.0	135.9	150.9	198.5

(a) Reference base of each index: 1989-90 = 100.0.

EXPORT PRICE INDEX (a): All groups, index numbers and percentage changes

<i>Period</i>	<i>Index numbers</i>	<i>% change from previous period</i>	<i>% change from corresponding quarter of previous year</i>
2004–05	116.4	13.6	. .
2005–06	136.0	16.8	. .
2006–07	146.8	7.9	. .
2007–08	149.6	1.9	. .
2003			
December	99.6	–3.1	–12.6
2004			
March	99.6	0.0	–12.0
June	108.0	8.4	2.1
September	115.4	6.9	12.3
December	113.6	–1.6	14.1
2005			
March	113.0	–0.5	13.5
June	123.5	9.3	14.4
September	129.3	4.7	12.0
December	132.1	2.2	16.3
2006			
March	138.7	5.0	22.7
June	143.7	3.6	16.4
September	146.4	1.9	13.2
December	146.7	0.2	11.1
2007			
March	146.7	0.0	5.8
June	147.2	0.3	2.4
September	142.8	–3.0	–2.5
December	142.0	–0.6	–3.2
2008			
March	146.9	3.5	0.1
June	166.8	13.5	13.3
September	189.8	13.8	32.9

. . not applicable

(a) Reference base of each index: 1989–90 = 100.0.

EXPORT PRICE INDEX(a): SITC contribution to all groups index

Category	CONTRIBUTION TO ALL GROUPS (INDEX POINTS)		CHANGE IN POINTS CONTRIBUTION
	Jun Qtr 2008(b)	Sep Qtr 2008	Jun Qtr 2008 to Sep Qtr 2008
ALL GROUPS			
All groups	166.8	189.8	23.0
SELECTED SITC SECTIONS			
0 Food and live animals	19.54	20.71	1.17
1 Beverages and tobacco	2.75	2.63	-0.12
2 Crude materials, inedible, except fuels	45.32	48.43	3.11
3 Mineral fuels, lubricants and related materials	41.04	58.46	17.42
5 Chemicals and related products, n.e.c.	7.17	7.47	0.30
6 Manufactured goods classified chiefly by material	21.43	21.10	-0.33
7 Machinery and transport equipment	12.76	13.39	0.63
8 Miscellaneous manufactured articles	4.45	4.74	0.29
SELECTED SITC DIVISIONS			
00 Live animals other than animals of division 03	0.89	1.03	0.14
01 Meat and meat preparations	6.59	7.41	0.82
02 Dairy products and birds' eggs	2.43	2.35	-0.08
03 Fish, crustaceans, molluscs and aquatic invertebrates and preparations thereof	0.99	1.05	0.06
04 Cereals and cereal preparations	4.73	4.79	0.06
05 Vegetables and fruit	1.30	1.31	0.01
11 Beverages	2.63	2.51	-0.12
21 Hides, skins and furskins, raw	0.66	0.67	0.01
26 Textile fibres and their wastes	3.12	3.02	-0.10
28 Metalliferous ores and metal scrap	38.95	41.97	3.02
32 Coal, coke and briquettes	23.83	40.45	16.62
33 Petroleum, petroleum products and related materials	10.61	10.45	-0.16
52 Inorganic chemicals	0.73	0.78	0.05
54 Medicinal and pharmaceutical products	3.55	3.59	0.04
61 Leather, leather manufactures, n.e.c., and dressed furskins	0.35	0.34	-0.01
67 Iron and steel	2.55	3.01	0.46
68 Non-ferrous metals	14.96	14.13	-0.83
71-75 Power generating, general industrial and other specialised machinery and equipment	5.27	5.66	0.39
76-77 Telecommunications equipment, sound recording apparatus and electrical machinery, n.e.c	2.52	2.61	0.09
78 Road vehicles (incl. air-cushion vehicles)	3.72	3.83	0.11
79 Transport equipment (excl. road vehicles)	1.25	1.30	0.05
89 Miscellaneous manufactured articles, n.e.c.	2.03	2.17	0.14

(a) Reference base of each index: 1989-90 = 100.0.

(b) Differs from previously published June quarter 2008 due to annual reweighting.

EXPORT PRICE INDEX(a): Selected SITC sections

<i>Period</i>	<i>Food and live animals (0)</i>	<i>Beverages and tobacco (1)</i>	<i>Crude materials, inedible, except fuels (2)</i>	<i>Mineral fuels, lubricants and related materials (3)</i>	<i>Chemicals and related products, n.e.c. (5)</i>	<i>Manufactured goods classified chiefly by material (6)</i>	<i>Machinery and transport equipment (7)</i>	<i>Miscellaneous manufactured articles (8)</i>
2004-05	106.8	126.4	103.1	184.9	108.3	121.1	88.4	89.2
2005-06	112.0	124.8	121.3	254.0	118.8	139.8	89.8	94.4
2006-07	117.3	119.0	147.3	229.5	125.5	187.0	88.7	94.7
2007-08	132.5	105.0	148.0	250.1	115.2	170.1	85.1	87.3
2003								
December	99.2	122.7	86.7	134.7	90.1	95.5	89.4	90.2
2004								
March	100.2	122.5	87.8	127.3	98.6	100.5	86.5	88.0
June	103.0	126.3	95.0	153.3	106.1	110.7	89.0	89.6
September	108.6	128.9	100.2	177.1	108.2	121.0	89.6	90.4
December	106.2	125.5	98.7	174.5	106.2	119.7	88.3	88.7
2005								
March	105.5	124.4	98.6	174.3	106.4	119.7	87.0	88.3
June	106.8	126.6	115.0	213.6	112.2	124.1	88.5	89.2
September	108.7	126.3	116.7	248.4	110.5	123.0	89.0	92.9
December	110.2	126.5	118.0	250.9	115.3	127.3	89.7	94.0
2006								
March	112.8	127.2	124.2	259.0	120.7	144.1	90.3	95.1
June	116.3	119.3	126.3	257.7	128.6	164.6	90.2	95.7
September	113.3	119.3	140.8	247.5	128.9	178.6	88.9	96.0
December	117.9	119.6	144.4	233.5	126.2	185.8	89.3	95.5
2007								
March	120.6	119.6	148.0	222.3	126.1	186.1	89.1	94.8
June	117.4	117.4	155.8	214.7	120.9	197.4	87.5	92.5
September	117.3	111.9	146.3	216.4	119.1	179.2	87.3	89.8
December	121.4	102.0	138.7	230.4	113.3	167.0	85.1	87.7
2008								
March	140.0	104.5	139.0	235.6	111.3	165.2	85.1	87.1
June	151.3	101.5	168.0	318.1	117.2	169.0	83.0	84.6
September	160.4	97.3	179.5	453.0	122.0	166.3	87.1	90.1

(a) Reference base of each index: 1989-90 = 100.0.

EXPORT PRICE INDEX (a): Rural goods

BALANCE OF PAYMENTS CLASSIFICATION OF EXPORTS

<i>Period</i>	<i>Rural goods total</i>	<i>Meat and meat preparations</i>	<i>Cereal grains and cereal preparations</i>	<i>Wool and sheepskins</i>	<i>Other rural</i>
2004–05	97.2	137.2	87.4	70.8	117.4
2005–06	97.5	136.4	87.8	63.0	121.2
2006–07	102.4	134.2	100.2	72.1	124.5
2007–08	118.2	140.3	142.6	81.9	137.3
2003					
December	94.4	121.1	92.3	79.0	111.6
2004					
March	94.1	126.2	90.7	74.8	111.1
June	95.8	124.4	94.1	74.4	115.1
September	100.3	138.6	94.9	76.7	118.9
December	96.8	138.7	85.7	71.6	116.3
2005					
March	95.3	136.0	84.5	68.0	115.6
June	96.2	135.5	84.3	66.7	118.9
September	97.4	140.7	84.0	64.9	120.4
December	97.1	135.5	87.7	60.6	121.6
2006					
March	97.2	133.7	89.9	60.2	121.7
June	98.1	135.7	89.5	66.2	121.0
September	96.3	131.2	86.6	65.6	120.3
December	101.0	137.9	96.9	66.0	123.4
2007					
March	106.2	138.7	108.7	76.3	125.8
June	105.9	129.1	108.7	80.4	128.3
September	106.7	127.8	112.4	80.6	128.9
December	110.1	126.0	125.3	81.2	132.2
2008					
March	124.4	142.0	159.0	85.7	143.2
June	131.5	165.4	173.7	80.1	144.8
September	137.4	186.2	175.9	76.7	149.4

(a) Reference base of each index: 1989–90 = 100.0.

BALANCE OF PAYMENTS CLASSIFICATION OF EXPORTS

<i>Period</i>	<i>Non-rural goods total (excl. non- monetary gold)</i>	<i>Metal ores and minerals</i>	<i>Coal, coke and briquettes</i>	<i>Other mineral fuels</i>	<i>Metals (excl. non- monetary gold)</i>	<i>Machinery</i>	<i>Transport equipment</i>	<i>Other manufactures</i>	<i>Other non- rural</i>	<i>Non- monetary gold</i>
2004-05	126.8	124.8	139.9	289.2	125.4	78.9	110.4	107.2	73.0	114.9
2005-06	153.1	158.1	208.2	352.4	148.7	80.2	111.7	109.5	83.2	144.6
2006-07	165.6	196.3	174.7	360.6	211.2	79.8	109.1	109.1	85.2	166.2
2007-08	162.9	188.7	166.5	466.0	189.4	77.7	102.6	105.2	74.9	187.8
2003										
December	103.1	92.6	95.2	228.0	93.9	79.7	111.8	101.4	68.0	112.1
2004										
March	103.5	99.2	87.5	220.9	101.2	77.3	107.7	102.4	66.3	109.6
June	115.1	111.9	110.7	254.0	112.4	78.5	112.8	106.0	68.9	112.8
September	124.1	118.0	127.1	295.8	124.5	79.3	113.2	108.7	72.7	115.9
December	122.7	117.4	128.2	283.2	123.9	78.8	110.2	107.1	71.9	117.5
2005										
March	122.7	120.0	133.2	269.1	124.7	78.1	108.1	105.1	71.5	112.5
June	137.6	143.8	171.2	308.6	128.3	79.4	110.0	107.8	75.8	113.8
September	145.3	145.4	205.2	339.7	127.1	79.5	111.1	109.2	77.0	118.6
December	148.3	150.5	211.7	329.5	132.5	79.6	112.5	110.6	79.6	133.9
2006										
March	156.6	165.1	213.2	356.5	154.4	80.4	112.7	108.5	85.0	153.5
June	162.2	171.5	202.8	383.7	180.8	81.3	110.6	109.8	91.0	172.2
September	167.1	191.1	189.2	386.2	199.2	79.7	109.8	111.1	88.8	167.2
December	166.2	194.8	178.5	364.2	210.2	80.1	110.3	109.1	86.6	163.7
2007										
March	163.9	196.3	171.0	343.7	210.2	80.1	109.6	108.6	84.4	169.6
June	165.2	203.1	160.1	348.2	225.0	79.3	106.5	107.6	81.1	164.4
September	158.5	189.9	155.6	368.0	201.3	79.3	106.0	106.2	75.6	164.6
December	155.0	175.8	146.1	451.2	185.6	77.3	103.4	105.8	71.6	181.3
2008										
March	155.2	173.6	143.3	479.8	182.5	77.7	102.3	105.0	74.2	210.0
June	182.7	215.6	220.9	565.0	188.2	76.3	98.8	103.8	78.2	195.3
September	212.6	232.2	374.9	590.9	184.2	80.8	102.0	108.0	80.7	200.9

(a) Reference base of each index: 1989-90 = 100.0.

EXPLANATORY NOTES

INTRODUCTION

1 This publication contains indexes measuring changes in the prices paid for imports of merchandise that are landed in Australia each quarter and prices received for exports of merchandise that are shipped from Australia each quarter. The import price indexes are in tables 1–6 and the export price indexes are in tables 7–11.

2 The indexes are calculated on the reference base 1989–90=100.0.

SCOPE

3 The import price index excludes the following items (representing less than 5% of the value of merchandise imported during the weighting period) because of the inherent difficulties in pricing the items to constant quality (see paragraph 15 below)

- live animals (not for food)
- jewellery and other articles of precious metal, n.e.c.
- military equipment
- commodities not classified according to kind
- works of art, collectors' pieces, antiques
- railway vehicles
- ships of various types.

4 The export price index includes re-exports of merchandise (i.e. goods which are imported into Australia and exported at a later date without physical transformation).

CLASSIFICATIONS

5 Index numbers for selected sections of the Standard International Trade Classification (SITC) are provided in table 3 (import price index) and table 9 (export price index). The SITC (Revision 4) used from the September quarter 2008 onwards is the United Nations' updated version, replacing SITC (Revision 3). SITC (Revision 4) retains the overall structure of SITC (Revision 3) and consists of the same number of sections, divisions and groups. Changes to the classification labels and components were made at levels lower than those used in the Import and Export Prices Indexes. As a result, there has been no material impact on the indexes, which remain comparable across the changes in classification.

6 The import price index is also presented by Balance of Payments Broad Economic Categories in tables 4–6, which have been disaggregated into balance of payments groupings of consumption goods, capital goods and intermediate and other merchandise goods. From the September quarter 2008 onwards, the previous heading of Classification of Broad Economic Categories (BEC) End Use, has been replaced with Balance of Payments Broad Economic Categories. This is simply a name change, with the series remaining comparable to previously published series.

7 The export price index is also presented by balance of payments classification of exports groupings in tables 10 and 11.

ITEMS AND WEIGHTS

8 The import price index and export price index are annually reweighted chained Laspeyres indexes. This method of weighting was introduced in the September quarter 2000 and replaces the 'fixed-base' method of weighting in which the weighting patterns are updated infrequently (generally once every 5 or 10 years).

9 The annual reweighting and chaining process involves a number of steps in order to provide new weights each year. The current weighting basis for the import price index was derived from the average value of import items during 2007–08. This differs slightly from the export price index which has used the average value of export items during 2006–07 and 2007–08, due to the greater volatility associated with the value of export items. These weights were revalued to reflect link period (June quarter 2008) price levels; this means, for example, that the weights for the import price index are effectively determined using quantities from 2007–08 and prices from June quarter 2008. Indexes derived by using the new weights for the September quarter 2008 were then linked to the already published June quarter 2008 (link period) levels which were derived using the previous series weights. Using this methodology, long-term chain linked series can

EXPLANATORY NOTES *continued*

ITEMS AND WEIGHTS *continued*

be constructed over time on a consistent reference base for continuity and user convenience, but using annually refreshed weights. The reference base for each index series continues to be 1989–90=100 even though the weights are being updated each year.

10 The commodities directly represented in each index (the index items) were selected on the basis of the significance of their import and export values in the period 2007–08 for imports and 2006–07 and 2007–08 for exports. All significant commodities were selected for pricing. The weights for minor commodities which are not directly priced are included with those of comparable directly priced items whose prices are likely to move in a similar way.

PRICE MEASUREMENT

11 In general, prices of individual shipments are obtained from major importers and exporters of the selected items and relate to the quarter in which the imported goods physically arrive in Australia and the exported goods physically leave Australia.

12 Imports are priced on a 'free on board' (f.o.b.), country of origin basis. Therefore freight and insurance charges involved in shipping goods from foreign to Australian ports are excluded from the prices used in the index, as are Australian import duties and taxes. Similarly, exports are priced on a f.o.b. basis at the main Australian ports of export. Exports are exempt from taxes on products.

13 As the prices used in the indexes are expressed in Australian currency, changes in the relative value of the Australian dollar and overseas currencies can have a direct impact on price movements for the many commodities that are bought and sold in currencies other than Australian dollars. Prices reported in a foreign currency are converted to Australian dollars using relevant exchange rates. Where imports or exports are transacted in prices expressed in terms of a foreign currency and forward exchange cover is used, the prices in the indexes exclude the forward exchange cover.

14 The main pricing methodology used is specification pricing, under which a manageable sample of precisely specified products is selected, in consultation with each reporting business, for repeat pricing. In specifying the products, care is taken to ensure that they are fully defined in terms of all the characteristics which influence their transaction prices. As such, all the relevant technical characteristics need to be described (e.g. make, model, features) along with the unit of sale, type of packaging, conditions of sale (e.g. delivered, payment within 30 days), etc. The goods are also specified by country and market in order to lessen the impact of price variations attributable solely to changes over time in the mix of countries, or markets.

15 When the quality or specifications of an item being priced change over time, adjustments are made to the reported prices so that the index captures only pure price change. That is, any element of price change attributable to a change in quality is removed. If there is an increase (decrease) in the quality of an item, then the price index is adjusted downwards (upwards) to reflect the 'worth' of the quality change. This technique is known as pricing to constant quality.

16 Wherever possible, prices from volume selling products being traded with predominant countries, or markets, are obtained to ensure specifications have a good chance of being re-priced over time and index series are representative of overall price movements. Individual product weights and weights between markets and countries are regularly reviewed to keep the indexes up to date.

INDEX NUMBERS

17 Index numbers for financial years are simple averages of the relevant quarterly index numbers.

ANALYSIS OF INDEX CHANGES

18 Care should be exercised when interpreting quarter-to-quarter movements in the indexes as short-term movements do not necessarily indicate changes in trend.

EXPLANATORY NOTES *continued*

ANALYSIS OF INDEX CHANGES *continued*

19 Movements in indexes from one period to another can be expressed either as changes in 'index points' or as percentage changes. The following example illustrates the method of calculating index points changes and percentage changes between any two periods:

Export price index, All groups index number:

September quarter 2008	189.8 (see table 7)
less September quarter 2007	142.8 (see table 7)
Change in index points	47.0
Percentage change	$47.0/142.8 \times 100 = 32.9\%$

20 Tables 2 and 8 provide analyses of the contribution which SITC sections and divisions make to the All groups import price index and export price index, respectively. For example, imports of mineral fuels, lubricants and related materials contributed 24.06 index points to the All groups import price index number of 123.7 for September quarter 2008 and 2.60 index points to the net change of 5.9 index points between June 2008 and September 2008 quarters.

FURTHER INFORMATION

21 For further information on price indexes in the ABS refer to the following publications:

Information Paper: Producer and International Trade Price Indexes; Concepts, Sources and Methods 2006, cat. no. 6429.0

Information Paper: An Analytical Framework for Price Indexes in Australia, cat. no. 6421.0

Information Paper: Producer Price Index Developments, cat. no. 6422.0

Information Paper: Review of the Import Price Index and Export Price Index, Australia, cat. no. 6424.0

Information Paper: Price Indexes and The New Tax System, cat. no. 6425.0

Information Paper: Changes to the Weights of the Price Indexes for the Output of the General Construction Industry, Australia, cat. no. 6406.0

RELATED PUBLICATIONS

22 Users may also wish to refer to the following related publications, which are available from the ABS website:

Producer Price Indexes, Australia, cat. no. 6427.0

Consumer Price Index, Australia, cat. no. 6401.0

Labour Price Index, Australia, cat. no. 6345.0

Australian National Accounts, Input–Output Tables, cat. no. 5209.0

Balance of Payments and International Investment Position, Australia, cat. no. 5302.0

23 Current publications and other products released by the ABS are listed in the *Catalogue of Publications and Products*, cat. no. 1101.0. The Catalogue is available from any ABS office or the ABS website <<http://www.abs.gov.au>>. The ABS also issues a daily Release Advice on the website which details products to be released in the week ahead.

APPENDIX INDEX STRUCTURES AND WEIGHTING PATTERNS

COMPOSITION

Both the Import Price Index and the Export Price Index have been reweighted in the September quarter 2008. It is ABS practice to reweight these indexes annually each September quarter, as explained in paragraphs 8–10 of the Explanatory Notes. The new weighting patterns for both the Import Price Index and Export Price Index, based on the Standard International Trade Classification (SITC) (Revision 4), are presented in this Appendix. SITC (Revision 4) replaces SITC (Revision 3) (refer to paragraphs 5–7 of the Explanatory Notes for details of the changes). As Revision 4 is comparable to Revision 3 at the level of classification published in the International Trade Price Indexes, there has been no material impact on the indexes.

All SITC sections and divisions are included in the reweighted index structure for completeness. However, indexes for some of the lower weighted SITC section and divisions are not constructed separately and so are not available for publication.

Corresponding new weighting patterns based on classification by Broad Economic Categories (BEC), Harmonized Tariff Item Statistical Classification (HTSIC) and Australian and New Zealand Standard Industrial Classification (ANZSIC) for the Import Price Index and Australian Harmonised Export Commodity Classification (AHECC) and ANZSIC for the Export Price Index can be made available on request.

IMPORT PRICE INDEX GROUPED BY SITC (REVISION 4) (a)(b)

SITC	PERCENTAGE CONTRIBUTION	
	Division to Sections	Divisions and Sections to All Groups
0 Food and live animals	100.00	3.76
01 Meat and meat preparations	5.67	0.21
02 Dairy products and birds' eggs	8.97	0.34
03 Fish (not marine mammals), crustaceans, molluscs and aquatic invertebrates, and preparations thereof	14.02	0.53
04 Cereals and cereal preparations	8.79	0.33
05 Vegetables and fruit	21.60	0.81
06 Sugars, sugar preparations and honey	3.08	0.12
07 Coffee, tea, cocoa, spices, and manufactures thereof	13.04	0.49
08 Feeding stuff for animals (excl. unmilled cereals)	6.76	0.25
09 Miscellaneous edible products and preparations	18.07	0.68
1 Beverages and tobacco	100.00	0.75
11 Beverages	87.26	0.65
12 Tobacco and tobacco manufactures	12.74	0.10
2 Crude materials, inedible, except fuels	100.00	1.32
21 Hides, skins and furskins, raw	0.11	0.00
22 Oil seeds and oleaginous fruits	2.28	0.03
23 Crude rubber (incl. synthetic and reclaimed)	7.49	0.10
24 Cork and wood	24.14	0.32
25 Pulp and waste paper	11.31	0.15
26 Textile fibres and their wastes (not manufactured into yarn or fabric)	5.08	0.07
27 Crude fertilisers (excl. those of Division 56) and crude minerals (excl. coal, petroleum and precious stones)	19.03	0.25
28 Metalliferous ores and metal scrap	18.20	0.24
29 Crude animal and vegetable materials, n.e.c.	12.36	0.16
3 Mineral fuels, lubricants and related materials	100.00	18.22
32 Coal, coke and briquettes	0.05	0.01
33 Petroleum, petroleum products and related materials	96.16	17.52
34 Gas, natural and manufactured	3.79	0.69

(a) Standard International Trade Classification (Revision 4).

(b) Indexes for some lower weighted sections/divisions are not available for publication.

APPENDIX INDEX STRUCTURES AND WEIGHTING PATTERNS *continued*

IMPORT PRICE INDEX GROUPED BY SITC (REVISION 4)(a)(b) *continued*

SITC	PERCENTAGE CONTRIBUTION	
	Division to Sections	Divisions and Sections to All Groups
4 Animal and vegetable oils, fats and waxes	100.00	0.30
41 Animal oils and fats	5.89	0.02
42 Fixed vegetable fats and oils, crude, refined or fractionated	83.20	0.25
43 Fats and oils (processed), waxes and inedible mixtures or preparations, of animal or vegetable origin, n.e.c.	10.91	0.03
5 Chemicals and related products, n.e.c.	100.00	10.91
51 Organic chemicals	16.00	1.75
52 Inorganic chemicals	5.99	0.65
53 Dyeing, tanning and colouring materials	2.69	0.29
54 Medicinal and pharmaceutical products	35.43	3.87
55 Essential oils and resinoids and perfume materials; toilet, polishing and cleansing preparations	7.38	0.80
56 Fertilisers (excluding crude)	10.17	1.11
57 Plastics in primary forms	8.14	0.89
58 Plastics in non-primary forms	5.69	0.62
59 Chemical materials and products, n.e.c.	8.51	0.93
6 Manufactured goods classified chiefly by material	100.00	10.69
61 Leather, leather manufactures, and dressed furskins, n.e.c.	0.59	0.06
62 Rubber manufactures, n.e.c.	11.56	1.24
63 Cork and wood manufactures (excl. furniture)	3.03	0.32
64 Paper, paperboard, and articles of paper pulp, of paper or of paperboard	12.41	1.33
65 Textile yarn, fabrics, made-up articles, n.e.c., and related products	11.29	1.21
66 Non-metallic mineral manufactures, n.e.c.	11.34	1.21
67 Iron and steel	18.64	1.99
68 Non-ferrous metals	9.35	1.00
69 Manufactures of metals, n.e.c.	21.79	2.33
7 Machinery and transport equipment	100.00	38.98
71 Power generating machinery and equipment	5.31	2.07
72 Machinery specialised for particular industries	9.72	3.79
73 Metal working machinery	0.95	0.37
74 General industrial machinery and equipment, n.e.c. and machine parts, n.e.c.	12.01	4.68
75 Office machines and automatic data processing machines	10.13	3.95
76 Telecommunications and sound recording and reproducing apparatus and equipment	13.25	5.16
77 Electrical machinery, apparatus, appliances, parts (incl. non-elec. counterparts of electrical domestic equip)	11.01	4.29
78 Road vehicles (including air-cushion vehicles)	32.66	12.73
79 Other transport equipment	4.96	1.93
8 Miscellaneous manufactured articles	100.00	11.38
81 Prefabricated buildings; sanitary, plumbing, heating and lighting fixtures and fittings, n.e.c.	2.96	0.34
82 Furniture, parts thereof; bedding, mattresses, mattress supports, cushions and similar stuffed furnishings	10.91	1.24
83 Travel goods, handbags and similar containers	2.74	0.31
84 Articles of apparel and clothing accessories	19.19	2.18
85 Footwear	4.91	0.56
87 Professional, scientific and controlling instruments and apparatus, n.e.c.	18.90	2.15
88 Photographic apparatus, equipment and supplies and optical goods, n.e.c.; watches and clocks	5.78	0.66
89 Miscellaneous manufactured articles, n.e.c.	34.61	3.94
9 Commodities and transactions not classified elsewhere in the SITC	100.00	3.69
97 Gold, non-monetary (excluding gold ores and concentrates)	100.00	3.69

(a) Standard International Trade Classification (Revision 4).

(b) Indexes for some lower weighted sections/divisions are not available for publication.

APPENDIX INDEX STRUCTURES AND WEIGHTING PATTERNS *continued*

EXPORT PRICE INDEX GROUPED BY SITC (REVISION 4) (a)(b)

SITC		PERCENTAGE CONTRIBUTION	
		Division to Sections	Divisions and Sections to All Groups
0	Food and live animals	100.00	11.71
00	Live animals other than animals of division 03	4.55	0.53
01	Meat and meat preparations	33.71	3.95
02	Dairy products and birds' eggs	12.46	1.46
03	Fish (not marine mammals), crustaceans, molluscs and aquatic invertebrates, and preparations thereof	5.05	0.59
04	Cereals and cereal preparations	24.21	2.84
05	Vegetables and fruit	6.66	0.78
06	Sugars, sugar preparations and honey	6.10	0.71
07	Coffee, tea, cocoa, spices and manufactures thereof	1.20	0.14
08	Feeding stuff for animals (excl. unmilled cereals)	3.70	0.43
09	Miscellaneous edible products and preparations	2.36	0.28
1	Beverages and tobacco	100.00	1.64
11	Beverages	95.58	1.57
12	Tobacco and tobacco manufactures	4.42	0.07
2	Crude materials, inedible, except fuels	100.00	27.16
21	Hides, skins and furskins, raw	1.45	0.39
22	Oil seeds and oleaginous fruits	0.69	0.19
23	Crude rubber (incl. synthetic and reclaimed)	0.01	0.00
24	Cork and wood	2.64	0.72
25	Pulp and waste paper	0.46	0.12
26	Textile fibres and their wastes (not manufactured into yarn or fabric)	6.89	1.87
27	Crude fertilisers (excl. those of Division 56) and crude minerals (excl. coal, petroleum and precious stones)	1.44	0.39
28	Metalliferous ores and metal scrap	85.95	23.35
29	Crude animal materials n.e.c.	0.47	0.13
3	Mineral fuels, lubricants and related materials	100.00	24.61
32	Coal, coke and briquettes	58.06	14.29
33	Petroleum, petroleum products and related materials	25.85	6.36
34	Gas, natural and manufactured	16.09	3.96
4	Animal and vegetable oils, fats and waxes	100.00	0.24
41	Animal oils and fats	74.63	0.18
42	Fixed vegetable fats and oils, crude, refined or fractionated	21.70	0.05
43	Fats and oils (processed), waxes and inedible mixtures or preparations, of animal or vegetable origin, n.e.c.	3.67	0.01
5	Chemicals and related products, n.e.c.	100.00	4.31
51	Organic chemicals	2.03	0.09
52	Inorganic chemicals	10.16	0.44
53	Dyeing, tanning and colouring materials	7.59	0.33
54	Medicinal and pharmaceutical products	49.45	2.12
55	Essential oils and resinoids and perfume materials; toilet, polishing and cleansing preparations	6.74	0.29
56	Fertilisers (excluding crude)	2.97	0.13
57	Plastics in primary forms	5.39	0.23
58	Plastics in non-primary forms	4.58	0.20
59	Chemical materials and products, n.e.c.	11.09	0.48

(a) Standard International Trade Classification (Revision 4).

(b) Indexes for some lower weighted sections/divisions are not available for publication.

APPENDIX INDEX STRUCTURES AND WEIGHTING PATTERNS *continued*

EXPORT PRICE INDEX GROUPED BY SITC (REVISION 4)(a)(b) *continued*

		PERCENTAGE CONTRIBUTION	
		
SITC		Division to Sections	Divisions and Sections to All Groups
6	Manufactured goods classified chiefly by material	100.00	12.84
61	Leather, leather manufactures, and dressed furskins, n.e.c.	1.62	0.21
62	Rubber manufactures, n.e.c.	1.00	0.13
63	Cork and wood manufactures (excl. furniture)	0.75	0.10
64	Paper, paperboard, and articles of paper pulp, of paper or of paperboard	3.09	0.40
65	Textile yarn, fabrics, made-up articles, n.e.c., and related products	1.75	0.22
66	Non-metallic mineral manufactures, n.e.c.	5.70	0.73
67	Iron and steel	11.90	1.53
68	Non-ferrous metals	69.80	8.96
69	Manufactures of metals, n.e.c.	4.39	0.56
7	Machinery and transport equipment	100.00	7.65
71-75	Power generating, general industrial and other specialised machinery and equipment	41.34	3.16
76-77	Telecommunications equipment, sound recording apparatus and electrical machinery n.e.c.	19.74	1.51
78	Road vehicles (including air cushion vehicles)	29.14	2.23
79	Other transport equipment	9.78	0.75
8	Miscellaneous manufactured articles	100.00	2.67
81-82	Prefabricated buildings, building fittings and furniture and parts thereof	5.56	0.15
83	Travel goods, handbags and similar containers	0.60	0.02
84	Articles of apparel and clothing accessories	4.87	0.13
85	Footwear	1.10	0.03
87	Professional, scientific and controlling instruments and apparatus n.e.c.	35.70	0.95
88	Photographic apparatus, equipment and supplies and optical goods, n.e.c.; watches and clocks	6.53	0.17
89	Miscellaneous manufactured articles n.e.c.	45.64	1.22
9	Commodities and transactions not classified elsewhere in the SITC	100.00	7.17
93	Special transactions and commodities not classified according to kind	10.40	0.75
96	Coin (other than gold coin), not being legal tender	1.56	0.11
97	Gold, non-monetary (excluding gold ores and concentrates)	88.04	6.31

(a) Standard International Trade Classification (Revision 4).

(b) Indexes for some lower weighted sections/divisions are not available for publication.

FOR MORE INFORMATION . . .

INTERNET

www.abs.gov.au the ABS website is the best place for data from our publications and information about the ABS.

INFORMATION AND REFERRAL SERVICE

Our consultants can help you access the full range of information published by the ABS that is available free of charge from our website. Information tailored to your needs can also be requested as a 'user pays' service. Specialists are on hand to help you with analytical or methodological advice.

PHONE

1300 135 070

EMAIL

client.services@abs.gov.au

FAX

1300 135 211

POST

Client Services, ABS, GPO Box 796, Sydney NSW 2001

FREE ACCESS TO STATISTICS

All statistics on the ABS website can be downloaded free of charge.

WEB ADDRESS

www.abs.gov.au